

KOKBOX

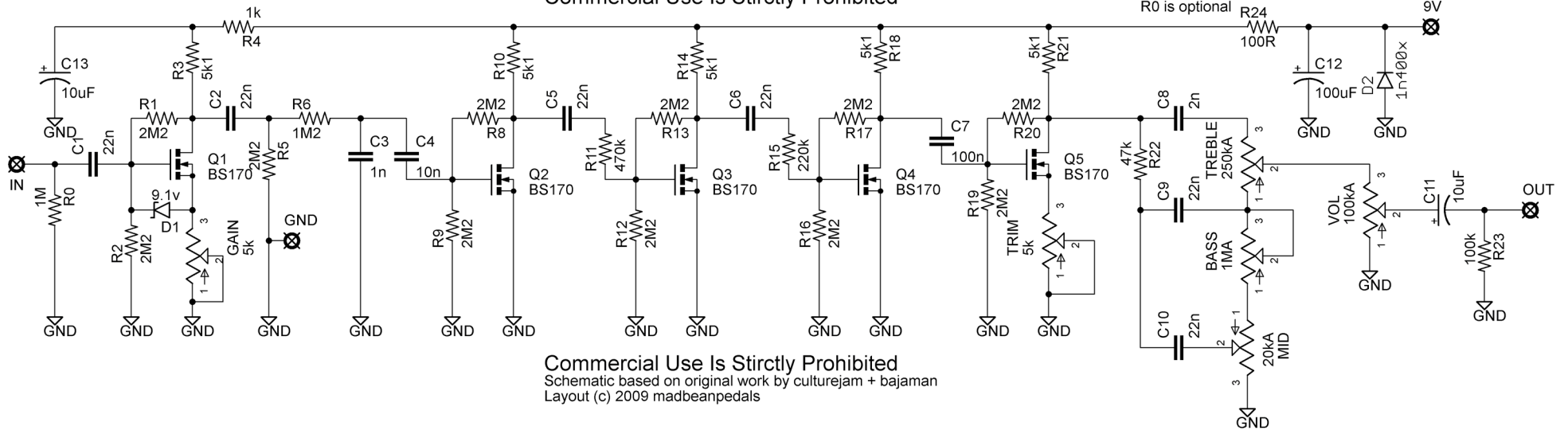
SCHEMATIC

KokBox rev. 1.0 - Jan 12, 2009
A zVex Box of Metal [k]lone

notes:
R6 can be 1M2 or 680k and 470k in series
R0 is optional

Commercial Use Is Strictly Prohibited

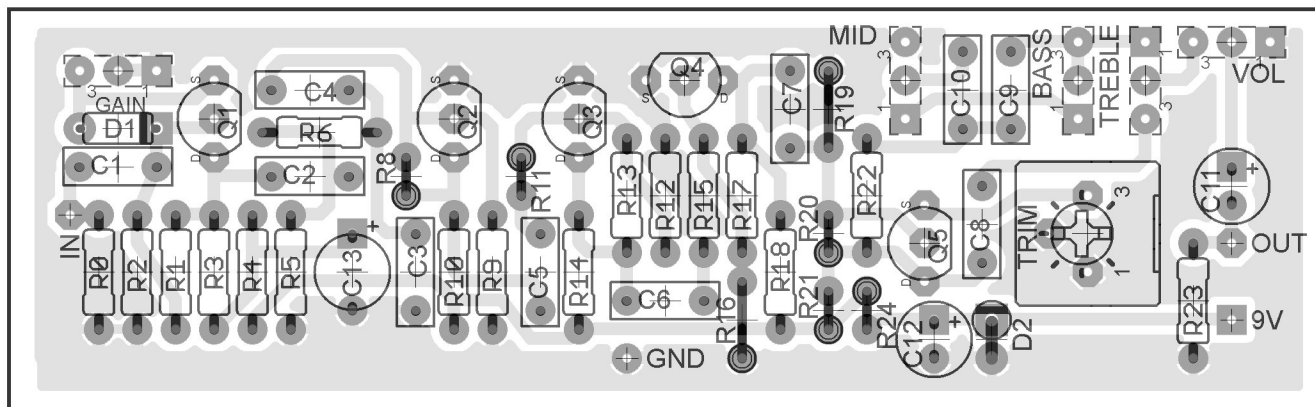
Commercial Use Is Strictly Prohibited
Schematic based on original work by culturejam + bajaman
Layout (c) 2009 madbeanpedals



KOKBOX

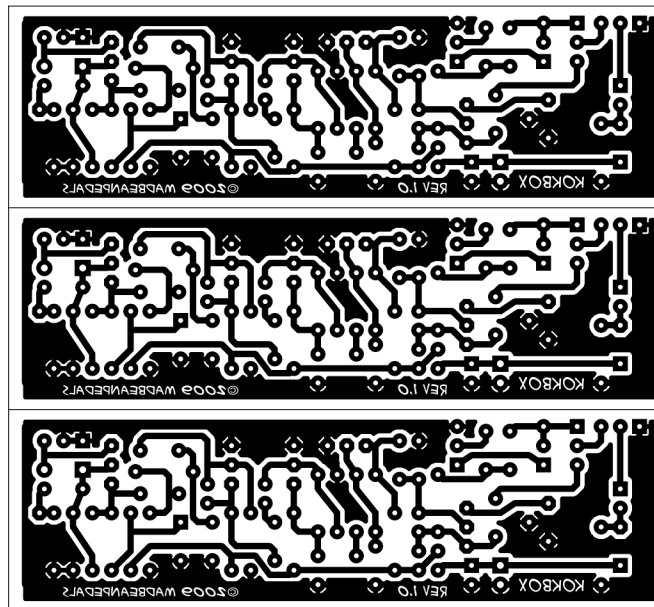
COMPONENT LAYOUT

REV. 1.0



C1	22N	R0	1M - OPTIONAL PULLDOWN
C2	22N	R1	2M2
C3	1N	R2	2M2
C4	10N	R3	5K1
C5	22N	R4	1K
C6	22N	R5	2M2
C7	100N	R6	1M2
C8	2N	R8	2M2
C9	22N	R9	2M2
C10	22N	R10	5K1
C11	10UF	R11	470K
C12	100UF	R12	2M2
C13	10UF	R13	2M2
D1	9.1V ZENER	R14	5K1
D2	1N400X	R15	220K
BASS	1MA	R16	2M2
GAIN	5K	R17	2M2
MID	20KA	R18	5K1
TREBLE	250KA	R19	2M2
TRIM	5K	R20	2M2
VOL	100KA	R21	5K1
Q1	BS170	R22	47K
Q2	BS170	R23	100K
Q3	BS170	R24	100R
Q4	BS170		
Q5	BS170		

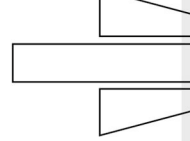
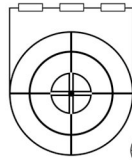
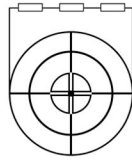
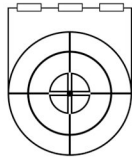
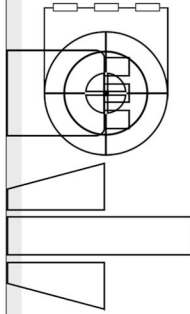
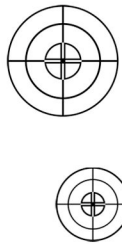
KOKBOX



FOR NON-COMMERCIAL USE!

KOKBOX

DRILLING + TEMPLATES



VOL

TREB

BASS

MID

GRIND



KOKBOX
MADBEANPEDALS

R1	R2	R3	R4	R5	R6	R7	R8	R9	R10	R11	R12	R13	R14	R15	
R16	R17	R18	R19	R20	R21	R22	R23	R24	R25	R26	R27	R28	R29	R30	

C1	C2	C3	C4	C5	C6	C7
C8	C9	C10	C11	C12	C13	C14
C15	C16	C17	C18	C19	C20	C21